



KIOSK ONE

ePoster #1

Case Report | Clinical Science | Abdominal/Laparoscopy

Sequential Superior Mesenteric Artery and Median Arcuate Ligament Syndromes in a Young Woman: Diagnostic and Therapeutic Challenges

Maya A Hammonds, MD, Ochsner Medical Center

ePoster #2

Abstract | Clinical Science | Abdominal/Laparoscopy

Give the Surgeons What They Want: Evaluating and Optimizing OR Trays

Victoria Sahar, MD, Ochsner Medical Center

ePoster #3

Case Report | Clinical Science | Bariatric/Foregut

Robotic Assisted Gastric Lap Band and Port Removal for Eroded Access Port Without Band Infection: A Case Report.

Erin Nischwitz, MD, Ochsner Medical Center

ePoster #4

Abstract | Clinical Science | Bariatric/Foregut

Small Bowel Anastomotic Leaks: Does Race Play a Role?

Cameron Shults, UQ Ochsner

ePoster #5

Case Report | Clinical Science | Bariatric/Foregut

Emergent Robotic Paraesophageal Hernia Repair with Anterior Gastropexy in a High-Risk Octogenarian

Shubham Bhatia MD, LSU Health - New Orleans

ePoster #6

Case Report | Clinical Science | Endocrine

GRANULOSA CELL TUMOR OF THE ADRENAL GLAND MANAGED BY OPEN ADRENALECTOMY: A RARE CASE AND LITERATURE REVIEW

Victoria Sahar, MD, Ochsner Medical Center

ePoster #7

[Case Report | Clinical Science | Endocrine](#)

Metastatic Papillary Thyroid Cancer with Distant Metastasis to Subcutaneous Tissue of the Buttock

Tyler Metz MD, Ochsner Medical Center

ePoster #8

[Case Report | Clinical Science | Endocrine](#)

The Wrong Side of the Tracks: An Adrenal Imposter

Bria Foley MD, Ochsner Medical Center

ePoster #9

[Case Report | Clinical Science | General Surgery](#)

Amyand's Hernia with acute appendicitis repaired with absorbable mesh: A case report

John Martone MD, Ochsner Medical Center

ePoster #10

[Case Report | Clinical Science | General Surgery](#)

When Zebras Show Up: Rare Case of Internal Hernia Secondary to Ureteral Compression

Veronica I Rodriguez Marino MD, Tulane School of Medicine

ePoster #11

[Abstract | Education | Education](#)

The Interplay of Model Parameter Size and Quantization in Open-Source LLMs: Implications for USMLE Performance and Medical Education

Mahmoud AbdAlnaeem , Tulane School of Medicine

ePoster #12

[Case Report | Clinical Science | Pediatric Surgery](#)

Turner Syndrome + Y Chromosome Mosaicism (TS+Y) with Non-Ovarian Gonadoblastoma: A Case Report

Samiza Bryoney Palmer MD, LSU Health - New Orleans



KIOSK TWO

ePoster #13

[Abstract | Clinical Science | Colon and Rectal Surgery](#)

Characterizing the surgical burden and outcomes of colorectal cancer among rural populations in Louisiana

Connie C Shao, MD, Ochsner Medical Center

ePoster #14

[Case Report | Clinical Science | Surgical Oncology](#)

Incidental high-grade appendiceal mucinous neoplasm in a renal transplant candidate: Literature review and a case report

Farman H Fatah, MD, Willis Knighton Health

ePoster #15

[Case Report | Clinical Science | Cardiac Surgery](#)

Airway Collapse from Chronic Ascending Aortic Dissection

Alexis Edmonson, MD, Tulane School of Medicine

ePoster #16

[Abstract | Clinical Science | Cardiac Surgery](#)

Managing Type A Dissection in the Setting of an Undiagnosed Aberrant Right Subclavian Artery

Daniel Spasic, Tulane School of Medicine

ePoster #17

[Abstract | Clinical Science | Plastic & Maxillofacial Surgery](#)

Medial Femoral Condyle Free Flap as Biologic Salvage for Recalcitrant Radius and Ulna Atrophic Nonunion After Failed Reconstruction: Case Report and Targeted Review

Christopher Branstetter, LSU Health - New Orleans

ePoster #18

[Case Report | Clinical Science | Plastic & Maxillofacial Surgery](#)

Complex Chronic Abdominal Morel-Lavallée Lesion Wounds - Management with Panniculectomy and Umbilical Transposition: A Case Report

Jessica Taylor Reid, Tulane School of Medicine

ePoster #19

[Abstract | Clinical Science | Plastic & Maxillofacial Surgery](#)

Morselized Ovine Forestomach Matrix for Lower Extremity Limb Salvage: Evidence from Three Complex Surgical Cases

JAMES PAI, Tulane School of Medicine

ePoster #21

[Abstract | Education | Surgical Education](#)

The Current Landscape for Preliminary Residents: Developing a National Database

Rebecca Moreci, MD, LSU Health - New Orleans

ePoster #22

[Case Report | Clinical Science | Transplantation Surgery](#)

Bezoar in allograft duodenum: Rare cause of bowel obstruction 13 years post-pancreas transplant

Marlena Khay Urvater, Ochsner Medical Center

ePoster #23

[Case Report | Clinical Science | Transplantation Surgery](#)

Grade 4 cytokine release syndrome and cardiogenic shock following anti-thymocyte globulin induction in a kidney transplant recipient: A case report

Sarah T Yanofsky, Tulane School of Medicine

ePoster #24

[Abstract | Basic/Transactional Science | Vascular Surgery](#)

Current Perspectives on the Use of Paclitaxel and Sirolimus at Anastomotic and Juxta-Anastomotic Sites During Arteriovenous Fistula Creation

Adam Garman, DO, LSU Health - Shreveport

ePoster #25

[Case Report | Clinical Science | Vascular Surgery](#)

Hybrid Management of Dysphagia Lusoria with Bilateral Subclavian Artery Transposition and Thoracic Endovascular Aortic Repair (TEVAR)

Rebecca Duhon, MD, LSU Health - Shreveport

ePoster #26

[Abstract | Clinical Science | Vascular Surgery](#)

Endovascular Management of Symptomatic Plantar Varicose Veins with Coils and Sclerotherapy

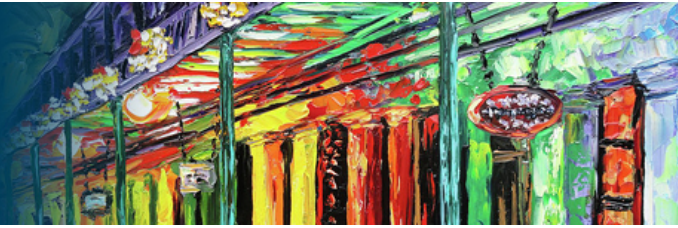
Adam Garman, DO, LSU Health - Shreveport

SAVE THE DATE!

LOUISIANA CHAPTER
ACS 74TH ANNUAL MEETING

APRIL 10-12, 2026

RENAISSANCE NEW ORLEANS ARTS WAREHOUSE DISTRICT HOTEL



KIOSK THREE

ePoster #27

[Abstract](#) | [Clinical Science](#) | [Trauma/Burn/Critical Care](#)

Borders in US Trauma Care: Outcome Disparities Among Migrant Workers, Undocumented, and Citizens

Seowoo Kim, Tulane School of Medicine

ePoster #28

[Abstract](#) | [Clinical Science](#) | [Trauma/Burn/Critical Care](#)

Reassessing Disparities Using TQIP: Sociodemographic Influences and Time to Surgery in Traumatic Hemoperitoneum With Hypotension

Mark Sanadi, Tulane School of Medicine

ePoster #29

[Abstract](#) | [Clinical Science](#) | [Trauma/Burn/Critical Care](#)

FRESH FROZEN PLASMA MAY DECREASE LEVELS OF ENDOTHELIAL DYSFUNCTION IN BURN INJURY PATIENTS

Anna Mermilliod, LSU Health - New Orleans

ePoster #30

[Abstract](#) | [Clinical Science](#) | [Trauma/Burn/Critical Care](#)

Risk Factors for Ventilator Associated Pneumonia in Trauma Intensive Care Unit Patients

Alison K Mortemore, MD, Tulane School of Medicine

ePoster #31

[Abstract](#) | [Clinical Science](#) | [Trauma/Burn/Critical Care](#)

Trends in Prehospital Trauma: Needle Decompression versus Blood Administration

Ikenna Ifearulundu, MD, LSU Health - New Orleans

ePoster #32

[Abstract](#) | [Clinical Science](#) | [Trauma/Burn/Critical Care](#)

When Surgery Waits: How Sociodemographic Factors Influence SSRF Timing in Rib Fracture Patients

Natalie Lim, Tulane School of Medicine

ePoster #33

[Abstract](#) | [Clinical Science](#) | [Trauma/Burn/Critical Care](#)

A Storm-Driven Surge: Increased Motor Vehicle Crash Incidence Around Named Storm Landfall

Jacie E Pujol, Tulane School of Medicine

ePoster #35

[Abstract](#) | [Basic/Transactional Science](#) | [Trauma/Burn/Critical Care](#)

Inflammatory Cytokines After Blood Transfusion in Trauma Patients: A Pilot Study

Dara Bruce, Tulane School of Medicine

ePoster #36

[Abstract](#) | [Clinical Science](#) | [Trauma/Burn/Critical Care](#)

Use of Bromelain-Based Enzymatic Debridement in Combination with Serial Autologous Skin Cell Suspension Application for Deep Facial Burns: A Case Series

Manasa Gujju, Tulane School of Medicine

ePoster #38

[Abstract](#) | [Basic/Transactional Science](#) | [Trauma/Burn/Critical Care](#)

Dimethyl Sulfoxide Mitigates Trauma-Induced Coagulopathy Through Endothelial Glycocalyx Protection via Membrane Reorganization in a Rat Hemorrhage-Resuscitation Model

David Engelhardt, LSU Health - New Orleans