

FINAL PROGRAM



APRIL 5-7

LOUISIANA CHAPTER 2024 ACS ANNUAL MEETING

RENAISSANCE NEW ORLEANS ARTS HOTEL WAREHOUSE DISTRICT

CO-CHAIR: JULIE CUPP, MD, FACS

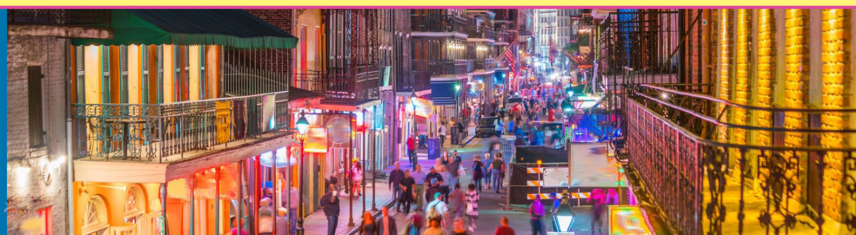
CO-CHAIR: MARQUINN DUKE, MD, FACS

PRESIDENT: MARY KILLACKY, MD, FACS

#LAACSAM24

LOUISIANA CHAPTER 2024 ACS ANNUAL MEETING

APRIL 5-7



RENAISSANCE NEW ORLEANS ARTS HOTEL WAREHOUSE DISTRICT

Saturday, April 6, 2024

7:00am-8:00am
**Committee on Trauma
Breakfast Meeting**
Salon I

7:00am-8:00am
**Speed Mentoring Breakfast for
Residents and Medical Students**
Art Gallery

8:00am-4:15pm
**LA-ACS
Annual Meeting**
Salon II-IV

12:00pm-12:45pm
Lunch & Business Meeting
Art Gallery

4:15pm-5:00pm
Resident Surgical Jeopardy
Salon IV

5:15pm-6:30pm
**Surgical Skills Competition
and Happy Hour**
Sculpture Garden (2nd floor)

Sunday, April 7, 2024

7:00am-8:00am
ePoster Competition
Patrons Ballroom Foyer

8:00am-12:30pm
LA-ACS Annual Meeting
Salon II-IV

7:00am-8:00am
Abstract Breakout Session A
Salon I

8:00am-12:30pm
Abstract Breakout Session B
Salon II-IV



Meeting Agenda
and Final Program



Meeting App
Download



Team Games &
Contestants

2024 LA-ACS Program Committee

Julie Cupp, MD, FACS – Co-Chair
Marquinn Duke, MD, FACS – Co-Chair
Mary Killackey, MD, FACS - President
Brett Chapman, MD, FACS
Jessica Zagory, MD, FACS
Mohammad Al Efshat, MD, FACS
Jane Sugar, MD, FACS
Jacquelyn Turner, MD, FACS
Kristen Limbach, MD – Resident Surgical Skills Co-Chair
Kamel Brakta, MD – Resident Surgical Skills Co-Chair

Podium and ePoster Abstracts are Available Online
laacs.org or LA-ACS Meeting App

Visit the Exhibitors All Day in the Patron Ballroom Foyer
Breakfast, Breaks, and Coffee are served here

LOUISIANA CHAPTER 2024 ACS ANNUAL MEETING

APRIL 5-7



RENAISSANCE NEW ORLEANS ARTS HOTEL WAREHOUSE DISTRICT

OVERALL LEARNING OBJECTIVES

At the conclusion of this activity, the learner should be able to...

The Louisiana Chapter ACS Annual Meeting will provide up-to-date information for community surgeons, academic surgeons, and the surgeon in training. Topics will cover a broad range of surgical practice interests including updates and advances in trauma and acute care, surgical oncology, general surgery, education, vascular surgery, pediatric surgery, and surgical endocrinology. The intent of the program is to improve the quality of patient care and improve patient safety.

DISCLOSURE INFORMATION

In accordance with the ACCME Accreditation Criteria, the American College of Surgeons must ensure that anyone in a position to control the content of the educational activity (planners and speakers/authors/discussants/moderators) has disclosed all financial relationships with any ineligible company held in the last 24 months. Please note that first authors were required to collect and submit disclosure information on behalf all other authors/contributors, if applicable.

CME EVALUATION AND CERTIFICATES

Please complete the online evaluation form to claim your total CME credits for the LA-ACS Chapter ACS Annual Meeting.

- Please complete the evaluation form by **Sunday, May 5, 2024.**
- Have your ACS ID ready.
- Certificates will be emailed on Wednesday, **May 15, 2024** if requested.
- Visit the LA-ACS ACS website to complete the evaluation or scan QR code.

CONTINUING MEDICAL EDUCATION CREDIT INFORMATION

Accreditation

The American College of Surgeons is accredited by the Accreditation Council for Continuing Medical Education (ACCME) to provide continuing medical education for physicians.

AMA PRA Category 1 Credits™

The American College of Surgeons designates this live activity for a maximum of **16.0 AMA PRA Category 1 Credits™**. Physicians should claim only the credit commensurate with the extent of their participation in the activity.

Of the AMA PRA Category 1 Credits™ listed above, a maximum of **1.00** hours meet the requirements for **Bariatric.***

Of the AMA PRA Category 1 Credits™ listed above, a maximum of **1.25** hours meet the requirements for **Cancer.***

Of the AMA PRA Category 1 Credits™ listed above, a maximum of **.75** hours meet the requirements for **Childrens Surgery.***

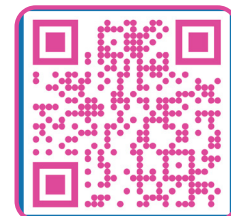
Of the AMA PRA Category 1 Credits™ listed above, a maximum of **.75** hours meet the requirements for **New Medical Technology.***

Of the AMA PRA Category 1 Credits™ listed above, a maximum of **1.25** hours meet the requirements for **Trauma.***

The content of this activity may meet certain mandates of regulatory bodies. Please note that ACS has not and does not verify the content for such mandates with any regulatory body. Individual physicians are responsible for verifying the content satisfies such requirements.



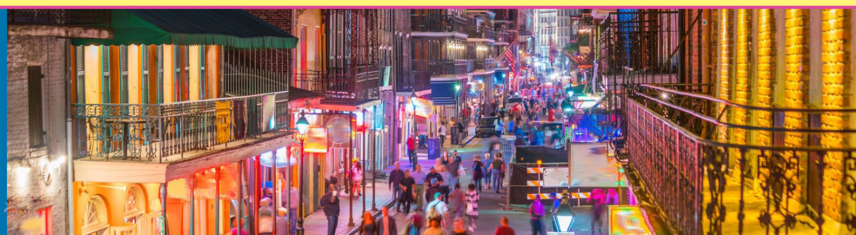
CME Breakdown &
Disclosure Form



CME Evaluation

LOUISIANA CHAPTER 2024 ACS ANNUAL MEETING

APRIL 5-7



RENAISSANCE NEW ORLEANS ARTS HOTEL WAREHOUSE DISTRICT

Saturday, April 6, 2024

7:00am

Registration/Breakfast/Exhibits Open

7:00am-8:00am

Committee Meetings

- COT (invite only)

7:00am-8:00am

Speed Mentoring Breakfast for Medical Students and Residents

8:10am-8:15am

Welcome

Mary Killackey, MD, FACS

LA-ACS President

8:15am-8:55am

Abstract Session | President's Session

Repair of Common Bile Duct Injuries During Cholecystectomy: The Sooner the Better

Peter Liao, MD - Ochsner Medical Center

Prognostic Role of RAS Mutations in Thyroid Cancer: A Human Genome Epidemiology Study

Mohamed Hussein, MD - Tulane School of Medicine

Implementation of Antibiotic Stewardship Program Improves Compliance and Length of Stay After Trauma

Emily K Adams, MD - LSU Health - Shreveport

Lost in Translation: Exploring the Exposome Link between Linguistic Isolation and Cancer Risk in the United States

Alaa N Malik, BS, BSM - LSU Health - New Orleans

Surgical Ampullectomy: A Viable but Underutilized Option for Ampullary Masses

Jessica R Rodriguez, MD - Willis-Knighton Health System

9:00am-9:40am

Abstract Session | Pediatric Surgery

Cost Effectiveness of Different Screening Modalities For Pediatric Blunt Cerebrovascular Injury: A Decision Tree Analysis

Alexandra Campbell, BS - Tulane School of Medicine

Multi-Disciplinary Concussion Clinic Helps Decrease Socioeconomic Barriers for Behavioral and Psychological Diagnosis after Sports-Related Concussions

Emma C Cole, BS - LSU Health - New Orleans

Medical Rights of Children under Law Enforcement Custody Vary by State

Blake A Gray, MD - Children's Hospital New Orleans

Novel Intestinal Expansion Sleeve (IES): Promoting Distraction Enterogenesis in a Live Animal Model (ROUX-EN-Y)

Sean Clayton, MD - LSU Health - Shreveport

Colorectal Surgical Outcomes for Patients with Trisomy 21 And Hirschsprung's Disease: A National Surgical Quality Improvement Program Study

Yumiko I Gely, MD - LSU Health - New Orleans

[yumikogely](#)



9:40am-10:15am

ACS Update

Deborah Kuhls, MD, FACS

ACS Second Vice-President

Professor and Chief, Division of Acute Care Surgery,
Chief of Trauma, University Medical Center
Kirk Kerkorian

School of Medicine at UNLV

[dakuhls](#)

10:15am-10:45am

Coffee Break with Exhibitors

LOUISIANA CHAPTER 2024 ACS ANNUAL MEETING

APRIL 5-7



RENAISSANCE NEW ORLEANS ARTS HOTEL WAREHOUSE DISTRICT

10:45am-11:15am

Mini-Talk Session | Trauma, Burn, & Critical Care

Food Insecurity Influences Firearm Homicide Mortality in United States Metropolitan Areas

Alexandra Campbell, BS - Tulane School of Medicine

Does Prehospital Blood Product Administration Improve the Likelihood of Receiving an ED Thoracotomy Following Traumatic Cardiac Arrest?

Hall M Braud - LSU Health - New Orleans

Risk Factors for Empyema Following Penetrating Diaphragmatic Injuries

Lydia C Rewerts - LSU Health - New Orleans

Higher Dosage of Prehospital Ketamine Associated With More ED Intubations in Trauma Patients

James M Charles, MD - LSU Health - New Orleans

Proteomics of Adipose Tissue Derived from Patients With Major Burn Injury: A Pilot Study

Jared Robinson, BS - LSU Health - New Orleans

Impact of Concomitant Traumatic Pancreatic and Colon Injuries on Outcomes

Danielle A Dooley, MD - Our Lady of the Lake Regional Medical Center/LSU



11:15am-12:00pm

Digital Health and AI for Surgeons

Danielle Walsh, MD, FACS

Professor & Vice Chair of Surgery for Quality

University of Kentucky



12:00pm-12:45pm

Lunch & Business Meeting

1:00pm-1:15pm

Mini-Talk Session | Surgical Potpourri I

What About Dad: Male Surgeons' Perspective on Family Support

Ikenna H Ifearulundu, MD - LSU Health - New Orleans

Implementing a Formal Interview Education Session for Senior Medical Students Applying to General Surgery Residency

Caroline Rhodes - Tulane School of Medicine

On a Scale of Work to Life, What's Imbalanced?

Jeanette A Zavala, MD - LSU Health - New Orleans

1:15pm-2:05pm

Abstract Session | Trauma, Burn, & Critical Care

The Inflammatory Response of Geriatric Patients with Major Burns Injuries

Sophia Trinh, MD LSU Health - New Orleans

LSU Health - New Orleans Interleukin-22 and Interleukin-22 Binding Protein Signaling Influences Respiratory Failure in Trauma

Augustus Anderson, IV - Tulane School of Medicine

Impact of Catastrophic Brain Injury Protocols On Organ Donation Rates: Results of an East Multicenter Trial

Erin Iacullo, BA - Tulane School of Medicine

Cytokine Profile of Adipose-Derived Stem Cells From Patients With Burn Injuries and Infection

Sophia Trinh, MD - LSU Health - New Orleans

Every Minute Counts: Extending The Continuum of Care Through Early Prehospital Blood Administration

Bryant J McLafferty, MS - Tulane School of Medicine

Abdominal Seatbelt Signs and Hollow Viscous Injury - The Predictive Value CT Free Fluid in Determining the Need for Observation

Jacob Stover, MD - LSU Health - New Orleans

2:05pm-2:25pm

Mini-Talk Session | Surgical Oncology

Targeted Inhibition of Inflammatory Cascade Increases Survival in Bile Duct Ligated Mouse Model of Liver Injury

Brandon Davilla, MD - LSU Health - New Orleans

LOUISIANA CHAPTER 2024 ACS ANNUAL MEETING

APRIL 5-7



RENAISSANCE NEW ORLEANS ARTS HOTEL WAREHOUSE DISTRICT

Diagnostic Utility of RAS Mutations in Cytologically Indeterminate Thyroid Nodules: A Systematic Review and Meta-Analysis

Isabel R Riccio, BS - Tulane School of Medicine

Incidence of Triple Negative Breast Cancer in Louisiana

Avery B Daily, MD - Willis-Knighton Medical Center

2:25pm-3:00pm

Break with Exhibitors

3:00pm-3:15pm

Mini-Talk Session | HPB

Disparities in the Multidisciplinary Management of Pancreatic Cancer Patients in Louisiana

Hannah R Malinosky, BS - LSU Health - New Orleans

Impact of Vascular Resection on The Surgical Outcomes in Patients with Pancreatic Tumor

Raquel Candal, MD

LSU Health - Shreveport

Obstructive Jaundice Due to Malignancy: Do All Patients Need Treatment?

Stephen J Bordes, Jr., MD

LSU Health - New Orleans

3:15pm-4:15pm

Bariatric Surgery Update

Moderator Philip Schauer, MD, FACS



Applying BPD/DS and SADI to the Modern Bariatric Practice

Peter Lundberg, MD, FACS
Surgical Clinic of Louisiana

[peter_lundberg_md](#)



GLP-1 as a Treatment for Obesity

Donna Ryan, MD
Pennington Biomedical Research Center



GLP1s and Gastric Emptying

Catherine Hudson, MD
LSU Health New Orleans

4:15pm-5:00pm

Resident Surgical Jeopardy

5:15pm-6:30pm

Resident Surgical Skills Competition + Happy Hour

Resident Surgical Skills Competition is an interactive skills competition designed to pit teams of residents against one another for the educational benefit of all attendees. Stations will mimic everyday surgical situations and tasks to test surgical trainees' skills and teamwork.

Sunday, April 7, 2024

7:00am-12:00pm

Registration and Exhibits Open

7:00am-8:00am

Continental Breakfast

7:00am-8:00am

ePoster Session

8:10am-8:30am

Mini-Talk Session | Surgical Potpourri II

Outcomes of Simultaneous Kidney-Pancreas Transplantation in Patients with Type-1 and Type-2 Diabetes Mellitus

Marissa Deniapolis, MD - Willis Knighton Health

Comparison of Medical Management versus Parathyroidectomy in Patients with Mild Primary Hyperparathyroidism: A Meta-Analysis

Peter P. Issa, BS - LSU Health - New Orleans

Femoral Vein Translocation for Complex Hemodialysis Access

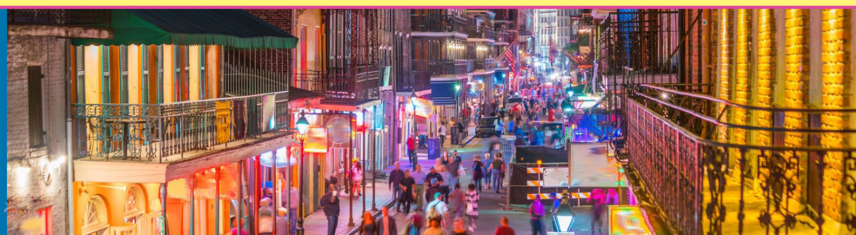
Alexander R Mikhail, MD - LSU Health - New Orleans

Retroileal anastomosis as a salvage maneuver following left-sided colorectal resection

Alhasan A Alani, MS - UQ Ochsner

LOUISIANA CHAPTER 2024 ACS ANNUAL MEETING

APRIL 5-7

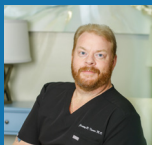


RENAISSANCE NEW ORLEANS ARTS HOTEL WAREHOUSE DISTRICT

8:30am-10:00am

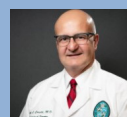
The Business of Surgery

Moderator: Jeremy Timmer, MD, FACS
Trauma Medical Director
Rapides regional Medical Center



Contracts 101

David "Beau" Dean Haynes, Jr.
Partner, Phelps Dunbar



ACS Coding & Billing

Ralph Corsetti, MD, FACS
Professor of Surgery, Edward G. Schlieder
Educational Foundation Chair in Surgical
Oncology; Tulane School of Medicine

10:00am-10:30am

Coffee Break with Exhibitors

10:30am-11:18am

Concurrent Abstract Session

Room 1 | Abstract Session | HPB/Oncology

Patient-Specific Modeling for Parathyroid Adenomas Using 3D Printing

Sylvia C Mullen - LSU Health - Shreveport

Impact of Louisiana Medicaid Expansion on Disparities in Pancreatic Cancer

Hannah R Malinosky, BS - LSU Health - New Orleans

Effect of Jejunostomy Feeding Tube Placement in Patients Undergoing Whipple Procedure

Nour Y Atassi, DO - Willis Knighton Medical Center

[portiamed24](#)

Ultrasound in the Assessment Of Regional Lymph Node Status For Nodal Staging In Newly Diagnosed Cutaneous Melanoma Patients: A Prospective Pilot Study

Kavin Sugumar, MD - Tulane School of Medicine

[KavinSugumar](#)

Impact of Positive Surgical Margins for Neuroendocrine Cancers

Sarah B Jacques, MD - LSU Health - New Orleans

Room 2 | Abstract Session | Surgical Potpourri

T-Helper 17 Cells as Potential Mediators of Fluoroquinolone Induced Aortic Aneurysms

Connor Eckholdt, MD - LSU Health - Shreveport

Is Luminal Stenosis an Absolute Contraindication to Watch and Wait for Rectal Cancer?

Chad Becnel, MD - Ochsner Medical Center

[cmbecnel](#)

Precision and Prospects of ChatGPT-4-Generated References for Colon and Rectal Surgical Literature

Aaron L Albuck, BS - Tulane School of Medicine

[aaronalbuck](#)

Feasibility Study of Pressure Measurement for Pressure Ulcer Prevention

Andrea L Brumley, MD - LSU Health - Shreveport

Propensity-Matched Analysis Between Patients With and Without CKD Undergoing Primary Vertical Sleeve Gastrectomy

Florina Corpodean, MD - LSU Health - New Orleans

[MdFlori](#)

Surgeons, Who's Watching the Kids?

Jeanette A Zavala, MD - LSU Health - New Orleans

11:20am-12:20pm

EPA Panel Discussion

Moderator:

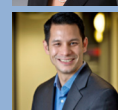
Valentine N. Nfonso, MD, MS, FACS, FASCRS



Elyse Bevier-Rawls, MD
LSU New Orleans



Jessica Gorham, MD, FACS
Ochsner Health



David Yu, MD
Tulane School of Medicine



Navdeep Samra, MD
LSU Shreveport



Donald Sorrells, Jr., MD
Willis Knighton Health System

12:30pm

Announcements, Awards, & Adjournment

LOUISIANA CHAPTER

2024 ACS ANNUAL MEETING

APRIL 5-7



RENAISSANCE NEW ORLEANS ARTS HOTEL WAREHOUSE DISTRICT

The American College of Surgeons
wishes to recognize and thank the
following companies for their commercial
promotion towards this educational activity:

Bronze Exhibitor
Organogenesis Inc.

Exhibitors

BD
Boston Scientific
CSL Behring
Devicor Medical Products, dba: Mammotome
Ethicon
Gore & Associates
Hologic
Karl Storz Endoscopy - United States
Kerecis
Medaxis
Medtronic
Organogenesis Inc.
Pacira Biosciences
Stryker
TELA Bio, Inc.

Thank You!
**To the Louisiana Surgical
Programs for sponsoring
the Surgical Skills Happy Hour**

Ochsner Health
LSU Health New Orleans
LSU Health Shreveport
Tulane School of Medicine
Willis-Knighton Health System



**VISIT 9 OR MORE OF THE LA-ACS
EXHIBITORS AND YOU WILL BE ENTERED FOR
A CHANCE TO WIN AIRPODS**

How to Enter & Play

Visit the exhibitors for a chance to win an
Apple Gift Card. Complete at least 9 signatures
to qualify for the raffle. Drop off your
completed card at the Registration Desk
by 11:00am on Sunday.

LOUISIANA CHAPTER 2024 ACS ANNUAL MEETING

APRIL 5-7



RENAISSANCE NEW ORLEANS ARTS HOTEL WAREHOUSE DISTRICT

Louisiana Chapter Fund Contribute Today!

Your contribution stays within your Chapter to support Louisiana Chapter initiatives. Your contributions will be used to support future Chapter leaders to attend the ACS Leadership and Advocacy Summit, send residents and medical students to meetings, purchase Stop The Bleed kits, and other efforts that benefit the Chapters.

Go to the American College of Surgeons Foundation secure online giving page. In the "Designation" drop down, choose "Chapter Programs Fund" then "If donating to Chapter Programs Fund" box enter "Louisiana Chapter" or use this QR Code.

The ACS Chapter Initiatives Fund program is a collaboration between the ACS Foundation and the ACS Division of Member Services. The program allows donors and potential donors to designate financial gifts to an ACS Chapter of their choosing. The ACS Foundation is recognized as a tax-exempt, not-for-profit organization, and therefore all contributions to a Chapter Initiatives Fund are tax deductible to the extent allowed by law.



SCAN HERE TO MAKE A DONATION TO THE
FOUNDATION IN THE NAME OF THE
LOUISIANA CHAPTER

