

FINAL PROGRAM



MARCH 24-26

LOUISIANA CHAPTER 2023 ACS ANNUAL MEETING

RENAISSANCE NEW ORLEANS ARTS HOTEL WAREHOUSE DISTRICT

CO-CHAIR: JACQUELYN S TURNER, MD, FACS
CO-CHAIR: TERRY LAIRMORE, MD, FACS

#LAACSAM23

LOUISIANA CHAPTER 2023 ACS ANNUAL MEETING

MARCH 24-26



RENAISSANCE NEW ORLEANS ARTS HOTEL WAREHOUSE DISTRICT

Agenda Saturday, March 25, 2023

7:00am-7:50am
**Commission on Cancer
Breakfast Meeting**
Red Cat

7:00am-8:00am
**Committee on Trauma
Breakfast Meeting**
Patrons I

7:00am-8:00am
**Speed Mentoring Breakfast for
Residents and Medical Students**
Art Gallery

8:00am-5:30pm
**LA-ACS Scientific
Meeting**
Patrons Ballroom II-IV

12:00pm-12:45pm
**Lunch & Business
Meeting**
Art Gallery

4:50pm-5:20pm
**Resident Surgical
Jeopardy
Round One**
Patrons I & Patron II-IV

5:20pm-6:30pm
**Women in Surgery
Reception**
All Welcomed
Patrons Foyer

Agenda Sunday, March 26, 2023

7:00am-8:00am
ePoster Competition
Kiosk I – Patrons I • Kiosk II - Red Cat
Kiosk III – Patrons II-IV

8:00am-12:15pm
LA-ACS Scientific Meeting
Patrons Ballroom II-IV



Meeting Agenda
and Final Program



Meeting App
Download



Jeopardy Schedule
and Contestants

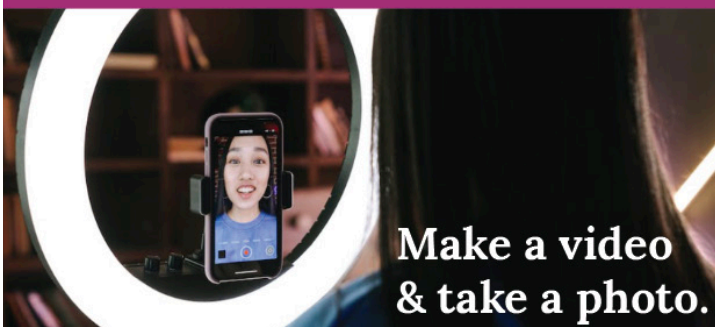


Abstract Scoring

Oral, Mini-Talks, and ePoster Abstracts are Available Online
LAACS.ORG

Visit the Exhibitors All Day in the Patrons Ballroom Foyer
Breakfast, Breaks, and Coffee are served here

Let's get people to **JOIN** in on the fun! Tell us your **Why**.

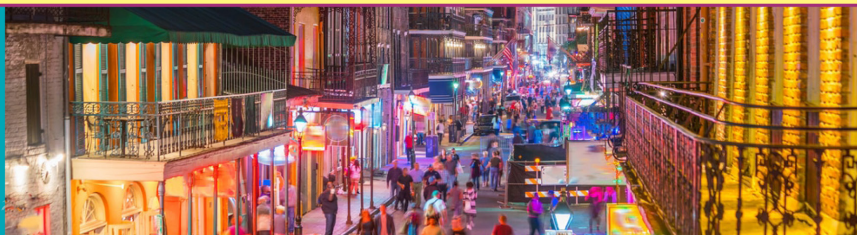


Make a video
& take a photo.

We have a Picture and Video Station setup.
Tell us about your experience as an LA-ACS
Member. Encourage people to Join.
Post on your social media **#LAACSAM23**.
Please email your video to janna@laacs.org.

LOUISIANA CHAPTER 2023 ACS ANNUAL MEETING

MARCH 24-26



RENAISSANCE NEW ORLEANS ARTS HOTEL WAREHOUSE DISTRICT

OVERALL LEARNING OBJECTIVES

At the conclusion of this activity, the learner should be able to...

- Recognize how the new continuous certification process works.
- Discuss the American Board of Surgery has restructured to meet the needs of its diplomates.
- Assess the ACS organizational structure
- Discuss the current areas of focus for the ACS
- Identify opportunities to be involved with the ACS
- Recognize the current programs and strategic direction of the Firearm Injury Programs of the American College of Surgeons (ACS) and the ACS Committee on Trauma
- Articulate the three principles developed by the ACS COT to reduce firearm injury in the US
- Evaluate areas for possible consensus around firearm injury prevention.
- Discuss early history of Charity Hospital
- Examine resident's stories from 50 years ago
- Reiterate the importance of supporting DEI efforts that impact learners, faculty, and staff.
- Gain a broader perspective on DEI challenges.
- Discuss next steps for DEI initiatives and solutions around challenges that are DEI related.

DISCLOSURE INFORMATION

In accordance with the ACCME Accreditation Criteria, the American College of Surgeons must ensure that anyone in a position to control the content of the educational activity (planners and speakers/authors/discussants/moderators) has disclosed all financial relationships with any ineligible company held in the last 24 months. Please note that first authors were required to collect and submit disclosure information on behalf all other authors/contributors, if applicable.

CME EVALUATION AND CERTIFICATES

Please complete the online evaluation form to claim your total CME credits for the LA-ACS Annual Meeting. Please complete the evaluation form by **Sunday, April 23, 2023**.

- Have your ACS ID ready.
- Certificates will be emailed on **Wednesday, April 26, 2023**.
- Visit the LA-ACS website to complete the evaluation or use the QR Code below.

CONTINUING MEDICAL EDUCATION CREDIT INFORMATION

Accreditation

The American College of Surgeons is accredited by the Accreditation Council for Continuing Medical Education (ACCME) to provide continuing medical education for physicians.

AMA PRA Category 1 Credits™

The American College of Surgeons designates this live activity for a maximum of 18.0 AMA PRA Category 1 Credits™. Physicians should claim only the credit commensurate with the extent of their participation in the activity.

Of the AMA PRA Category 1 Credits™ listed above, a maximum of **1.50** hours meet the requirements for **Trauma**.*

Of the AMA PRA Category 1 Credits™ listed above, a maximum of **.75** hours meet the requirements for **Surgical Critical Care**.*

Of the AMA PRA Category 1 Credits™ listed above, a maximum of **.75** hours meet the requirements for **Pediatric Surgery**.*

The content of this activity may meet certain mandates of regulatory bodies. Please note that ACS has not and does not verify the content for such mandates with any regulatory body. Individual physicians are responsible for verifying the content satisfies such requirements.



AMERICAN COLLEGE OF SURGEONS
DIVISION OF EDUCATION



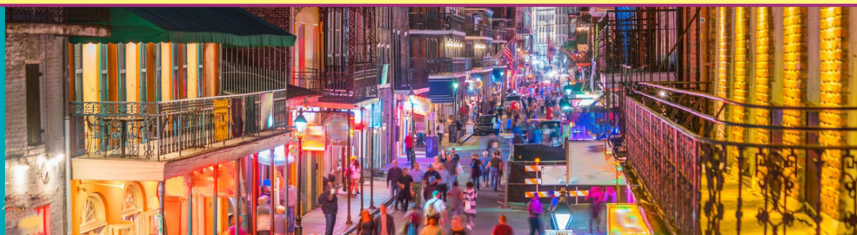
CME Breakdown &
Disclosure Form



CME Evaluation

LOUISIANA CHAPTER 2023 ACS ANNUAL MEETING

MARCH 24-26



RENAISSANCE NEW ORLEANS ARTS HOTEL WAREHOUSE DISTRICT

Agenda Saturday, March 25, 2023

6:45am-5:00pm

Registration and Exhibits Open

7:00am-8:00am

Continental Breakfast

7:00am-8:00am

Committee on Trauma Breakfast Meeting (invite only)

7:00am-8:00am

Speed Mentoring Breakfast for Medical Students and Residents

8:00am-8:10am

Welcome

by Donnie Aultman, MD, FACS

LA-ACS President

8:10am-9:00am

Scientific Session I | President's Session

SINGLE CELL RNA SEQUENCING ANALYSIS IN MURINE BILIARY ATRESIA MODEL REVEALS SUBPOPULATION OF BILIARY EPITHELIAL CELLS WITH PRO INFLAMMATORY AND FIBROGENIC TRAITS

Celia A Short MD, LSU Health - New Orleans, New Orleans, LA

EFFICIENCY OF IES DEVICE IN FACILITATING DISTRACTION ENTEROGENESIS FOR TREATING SHORT GUT SYNDROME

Collyn O'Quin, LSU Health - Shreveport, Shreveport, LA

MASS SHOOTING EVENTS IN MAJOR US CITIES PREDOMINATELY AFFECT COMMUNITIES OF COLOR

Michael Ghio MD, Tulane School of Medicine, New Orleans, LA

CARDIOVASCULAR HEALTH BY GRAVES' DISEASE MANAGEMENT MODALITY – SURGERY VERSUS RADIOACTIVE IODINE VERSUS ANTI-THYROID MEDICATIONS: A NETWORK META-ANALYSIS

Peter P. Issa BS, LSU Health - New Orleans, New Orleans, LA

MULTIDISCIPLINARY BREAST CANCER CLINIC: A NOVEL APPROACH TO DECREASE TIME TO INTERVENTION

Ashlyn M Alongi MD, Ochsner Medical Center, New Orleans, LA

9:00am-9:40am

Scientific Session II | Surgical Potpourri

CONVERSION SADI-S VS CONVERSION RYGB AFTER PRIMARY GASTRIC RESTRICTIVE SURGERY: A MBSAQIP PROPENSITY MATCHED ANALYSIS

Erin E Coonan BS, Tulane School of Medicine, New Orleans, LA

GASTROINTESTINAL DISCONTINUITY AFTER EMERGENCY LAPAROTOMY

George Fuhrman, MD, FACS, Ochsner Medical Center, New Orleans, LA

IMPACT OF COVID-19 VACCINATION STATUS ON PERIOPERATIVE OUTCOMES IN GENERAL SURGERY

Jessica Rodriguez, LSU Health - Shreveport, Shreveport, LA

TIMING OF DIVERTING LOOP ILEOSTOMY CLOSURE

George Fuhrman, MD, FACS, Ochsner Medical Center, New Orleans, LA



9:40am-10:10am

ACS GUEST SPEAKER

Current Areas of Focus for the American College of Surgeons

E Christopher C Ellison, MD, FACS
American College of Surgeons President
Professor Emeritus of Surgery
The Ohio State University
Columbus, Ohio

[@2_ellison](#)

10:10am-10:40am

Coffee Break with Exhibitors

10:45am-11:00am

American Board of Surgery Updates



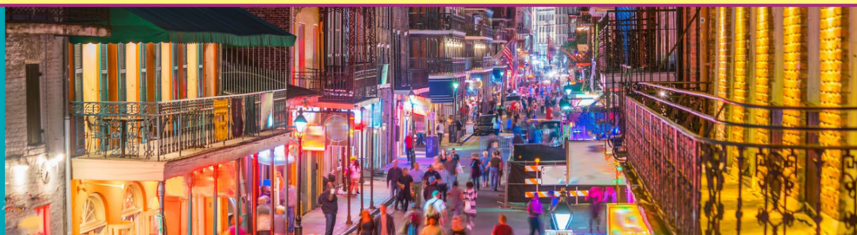
Obtaining and Maintaining Your American Board of Surgery Certification

Valentine N. Nfonsam, MD, FACS
Chair, LSU Health New Orleans
Department of Surgery

[@ValNfonsam](#)

LOUISIANA CHAPTER 2023 ACS ANNUAL MEETING

MARCH 24-26



RENAISSANCE NEW ORLEANS ARTS HOTEL WAREHOUSE DISTRICT

11:00am-11:15am

Mini-Talk Session I

ASSESSING RESIDENTS' PHYSICAL WELLNESS AND BARRIERS TO EXERCISE

Hector G. Mejia Morales, MD, Tulane School of Medicine, New Orleans, LA

EFFECT OF MEDICAID EXPANSION ON GENERAL SURGERY CASE VOLUME ESSENTIAL FOR RESIDENT EDUCATION

Sarah V Lauve, BS, LSU Health - Shreveport, Shreveport, LA

PREDICTORS OF RESEARCH PRODUCTIVITY IN GENERAL SURGERY RESIDENCY: A SINGLE INSTITUTION'S EXPERIENCE

Aaron L Albuck, BS, Tulane School of Medicine, New Orleans, LA

A SURVEY OF CHALLENGES FACING FEMALE SURGEONS: DO YOU RECOMMEND STUDENTS FOLLOW IN YOUR FOOTSTEPS?

Jeanette A Zavala, LSU Health - New Orleans, New Orleans, LA

11:15am-12:00pm

GUEST SPEAKER

Firearm Injury Prevention:

The Common Narrative from the ACS COT



Ronald Stewart, MD, FACS
Professor and Chair of Surgery
UT Health San Antonio

San Antonio, Texas

[@Stewartr84](#)

12:00pm-12:45pm

Lunch & Business Meeting

12:45pm-1:00pm

Mini-Talk Session II

LAPAROSCOPIC SLEEVE GASTRECTOMY FOR WEIGHT LOSS IN LVAD PATIENTS BRIDGING TO TRANSPLANT

Elizabeth D Winter MD, Ochsner Medical Center, New Orleans, LA

SCREENING FOR GERD IN BARIATRIC SURGERY: THE PREDICTIVE VALUE OF THE GERD-HRQL QUESTIONNAIRE SCORE COMPARED WITH PREOPERATIVE EGD FINDINGS

Jonathan K. Allotey, Tulane School of Medicine, New Orleans, LA

1:00pm-2:00pm

PANEL DISCUSSION

Diversity, Equity, and Inclusion: Where Do We Go from Here?



Moderators: Drs. Danielle Kay and Shawn McKinney

Panel: Drs. Marquinn Duke, Mary Brandt, Juan Duchesne, and Rafael Tolentino

2:00pm-2:50pm

Scientific Session III | Trauma, Burns, and Critical Care

COT Clinical Science Winner

A MULTI-CENTER STUDY OF POST-OPERATIVE ANTIBIOTIC DURATION FOR MAJOR HEPATIC TRAUMA

Blake J Platt MD, LSU Health - New Orleans, New Orleans, LA

COT Basic Science Winner

ASSOCIATION OF SUCCINATE LEVELS AND MMP24-SYNDECAN-1 INTERACTION WITH GLYCOLYX SHEDDING IN HEMORRHAGING TRAUMA PATIENTS

Michael Ghio MD, Tulane School of Medicine, New Orleans, LA

AN ALGORITHM TO PREVENT MISSED BOWEL INJURIES IN BLUNT AND PENETRATING ABDOMINAL TRAUMA PATIENTS

Logan C Gold BS, LSU Health - New Orleans, New Orleans, LA

A MULTI-CENTER STUDY OF PERIOPERATIVE HEPATIC ANGIOEMBOLIZATION AS AN ADJUNCT FOR MANAGEMENT OF MAJOR OPERATIVE HEPATIC TRAUMA

Paige E Deville MD, LSU Health - New Orleans, New Orleans, LA

LOUISIANA CHAPTER 2023 ACS ANNUAL MEETING

MARCH 24-26



RENAISSANCE NEW ORLEANS ARTS HOTEL WAREHOUSE DISTRICT

RECIDIVISM IN TRAUMA: DETERMINING RISK FACTORS FOR RECIDIVISM AT A LEVEL I TRAUMA CENTER

Emily K Adams MD, LSU Health - Shreveport, Shreveport, LA

2:50pm-3:20pm

Coffee Break with Exhibitors

3:20pm-4:00pm

Mini-Talk Session III

ADIPOSE DERIVED STEM CELL PARACRINE FACTOR RELEASE IN SMOKERS VS NON SMOKERS WITH BURN INJURIES

Paige E Deville MD, LSU Health - New Orleans, New Orleans, LA

RANKING INJURY MECHANISMS AFFECTING CHILDREN USING AN INJURY PREVENTION PRIORITY SCORE TO ASSESS OUR COMMUNITY'S NEEDS

Allison Mak, MD, LSU Health - New Orleans, New Orleans, LA

LOCAL CONTROL OF PYODERMA GANGRENOSUM USING DEHYDRATED HUMAN AMNIOTIC/CHORIONIC MEMBRANE AND TRANSCRIPTOME ANALYSIS

Mark A Maier, II, BS, LSU Health - New Orleans, New Orleans, LA

OUTCOMES OF A LIMB SPARING APPROACH TO PEDIATRIC BONE TUMORS WITH BLOOD VESSEL INVOLVEMENT

Jason Reagor, MD, LSU Health - New Orleans, New Orleans, LA

INTERVENTIONAL MANAGEMENT OF ACUTE MASSIVE AND SUBMASSIVE PULMONARY EMBOLISM AT AN ACADEMIC TERTIARY REFERRAL CENTER

Tanisha Fleming, LSU Health - Shreveport, Shreveport, LA

EVALUATION OF PREOPERATIVE BLOOD TRANSFUSION REQUIREMENTS IN PEDIATRIC SICKLE CELL PATIENTS

Megan Vasterling, LSU Health - New Orleans, New Orleans, LA

SURGICAL EXCISION, DERMAL MATRIX, AND SKIN GRAFT APPLICATION FOR SEVERE HIDRADENITIS AXILLARIS IN ADOLESCENTS

Julia M Power, LSU Health - New Orleans, New Orleans, LA

ROBOTIC VERSUS LAPAROSCOPIC ADRENALECTOMY: A SINGLE SURGEON'S EXPERIENCE.

Sana Bader, MD, Willis Knighton Health System, Shreveport, LA

4:00pm-4:50pm

Remarkable Case Session

Remarkable Case | Pediatric Surgery

A CASE OF IN-UTERO FETAL PENETRATING TRAUMA FOLLOWING MATERNAL FIREARM INJURY

Jenny Stevens MD, LSU Health - New Orleans, New Orleans, LA

Remarkable Case | Vascular Surgery

TRANS-CAROTID ARTERIAL REVASCULARIZATION (TCAR) WITH REVERSAL OF FLOW USING IPSILATERAL INTERNAL JUGULAR VEIN

Miles Minvielle MD, FACS, LSU Health - Shreveport, Shreveport, LA

Remarkable Case | Transplantation Surgery

DECEASED DONOR ORGAN PROCUREMENT IN A THIRD TRIMESTER DONOR: A TECHNICAL AND ETHICAL CHALLENGE

Aaron Cotton-Betteridge MD, Tulane School of Medicine, New Orleans, LA

Remarkable Case | Vascular Surgery

EMERGENT ENDOVASCULAR REPAIR OF A RUPTURED TYPE IV THORACOABDOMINAL ANEURYSM USING FOUR-VESSEL SNORKEL TECHNIQUE IN A HIGH-RISK PATIENT

Nicholas Gilbert MD, LSU Health - Shreveport, Shreveport, LA

Remarkable Case | General Surgery

LEIOMYOMATOSIS PERITONEALIS DISSEMINATA (LPD) IN A POSTMENOPAUSAL WOMAN WITHOUT PREDISPOSING FACTORS.

Melody Salmanian, Our Lady of the lake Regional Medical Center, Baton Rouge, LA

4:50pm-5:20pm

Resident Surgical Jeopardy

Round One

5:20pm-6:30pm

Women in Surgery Reception

LOUISIANA CHAPTER 2023 ACS ANNUAL MEETING

MARCH 24-26



RENAISSANCE NEW ORLEANS ARTS HOTEL WAREHOUSE DISTRICT

Agenda Sunday, March 26, 2023

7:00am-12:00pm

Registration and Exhibits Open

7:00am-8:00am

Continental Breakfast

7:00am-8:00am

ePoster Session

8:00am-9:00am

Scientific Session IV | Surgical Potpourri II

ARE MORE SOCIAL VULNERABILITY PATIENTS LESS LIKELY TO HAVE AN IDEAL ONCOLOGIC OUTCOME AFTER COLECTOMY FOR COLON CANCER? A MULTI HOSPITAL ANALYSIS

Jaron Pettis MD, Ochsner Medical Center, New Orleans, LA

SALVAGE MANEUVERS FOLLOWING LEFT-SIDED COLORECTAL RESECTION: DEROTATION OF THE RIGHT COLON AND RETROILEAL ANASTOMOSIS

Adam M Berenson MD, Ochsner Medical Center, New Orleans, LA

HASHIMOTO'S THYROIDITIS MINIMIZES LYMPH NODE METASTASIS IN BRAF MUTANT PAPILLARY THYROID CARCINOMAS

Peter P. Issa BS, LSU Health - New Orleans, New Orleans, LA

HIGH-RISK ULTRASOUND FINDINGS ARE SUPERIOR TO AFIRMA MOLECULAR PROFILING FOR PREDICTION OF POSTOPERATIVE PATHOLOGY IN RESECTED THYROID NODULES: AN INSTITUTIONAL EXPERIENCE

Raquel E Candal MD, LSU Health - Shreveport, Shreveport, LA

TREATMENT OUTCOMES FOLLOWING RADIO-FREQUENCY ABLATION OF TOXIC HYPERFUNCTIONING THYROID NODULES: A SYSTEMATIC META-ANALYSIS

Alexandra LaForteza M.Sc, Tulane School of Medicine, New Orleans, LA

9:00am-9:25am

Mini-Talk Session IV

BREAST CANCER SURVIVORSHIP IN LOUISIANA: IDENTIFYING CAUSES OF MORTALITY TO GUIDE RISK REDUCTION

Deniz Gungor, LSU Health - Shreveport, Shreveport, LA

INSTITUTIONAL ANALYSIS OF METAPLASTIC BREAST CANCER

Ashlyn M Alongi MD, Ochsner Medical Center, New Orleans, LA

USE OF THE DELAY PHENOMENON IN THORACODORSAL ARTERY PERFORATOR FLAP BREAST RECONSTRUCTION

Mark Maier, BS, LSU Health - New Orleans, New Orleans, LA

COMBINED ENDOSCOPIC ROBOTIC SURGERY FOR COMPLEX COLON POLYPS

Jacob M Broome MS, Tulane School of Medicine, New Orleans, LA

MALIGNANCY RISK FOLLOWING RADIOFREQUENCY ABLATION OF BETHESDA II, III AND IV THYROID NODULES

Tyler A Metz MS, Tulane School of Medicine, New Orleans, LA

9:25am-10:10am

GUEST SPEAKER



The Big Free-It's History and Stories

James M Ciaravella, Jr, MD, FACS

Retired Surgeon/Artist/Author

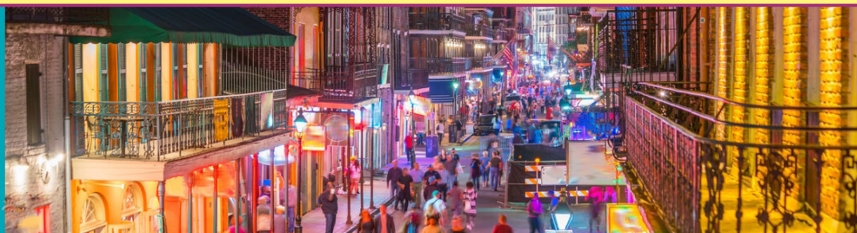
Shreveport, Louisiana

10:10am-10:30am

Coffee Break with Exhibitors

LOUISIANA CHAPTER 2023 ACS ANNUAL MEETING

MARCH 24-26



RENAISSANCE NEW ORLEANS ARTS HOTEL WAREHOUSE DISTRICT

10:30am-11:00am

Scientific Session V | Pediatric Surgery

VAGINAL EXPANSION SLEEVE: A NEW TREATMENT PARADIGM FOR VAGINAL AGENESIS

Lexus Trosclair, MD, LSU Health - Shreveport, Shreveport, LA

IMPACT OF BLOOD PRODUCT RESUSCITATION IS ASSOCIATED WITH DELETERIOUS OUTCOMES IN PEDIATRIC TBI

Jenny Stevens MD, LSU Health - New Orleans, New Orleans, LA

BEHAVIORAL SEQUELAE AMONG PEDIATRIC TRAUMA PATIENTS AFTER DISCHARGE FROM INPATIENT REHABILITATION

Hannah M LeBlanc BS, LSU Health - New Orleans, Mandeville, LA

Terry Lairmore, MD – Program Co-Chair

Jacquelyn Turner, MD – Program Co-Chair

Donnie Aultman, MD – LA-ACS President

Mo Al Efishat, MD

Mindy Bowie, MD

Brett Chapman, MD

Brian Kann, MD

Shauna Levy, MD

Hosein Shokouh-Amiri, MD

Amos Sit, MD

Keith White, MD

Jessica Zagory, MD

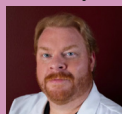
Gazi B Zibari, MD

11:00am-11:45am

PANEL DISCUSSION

The Great Debates

Jeremy Timmer, MD, FACS



Trauma/Acute Care Surgeon
Rapides regional Medical Center
Minimally Invasive Cholecystectomy

Hosein Shokouh-Amiri, MD, FACS



Clinical Professor of Surgery Director,
Liver Transplant at WK/John C. McDonald
Regional Transplant Center Co-Director
WK/John C. McDonald Regional Transplant Center
Open Cholecystectomy

11:45am-12:15pm

Resident Surgical Jeopardy

Final Round

12:15pm

Prizes/Announcements/Adjournment



VISIT 9 OR MORE OF THE LA-ACS EXHIBITORS AND YOU WILL BE ENTERED FOR A CHANCE TO WIN AN APPLE WATCH!

How to Enter & Play

Visit the exhibitors for a chance to win an Apple Gift Card. Complete at least 9 signatures to qualify for the raffle. Drop off your completed card at the Registration Desk by 11:00am on Sunday.

PROGRAM COMMITTEE

LOUISIANA CHAPTER 2023 ACS ANNUAL MEETING

MARCH 24-26



RENAISSANCE NEW ORLEANS ARTS HOTEL WAREHOUSE DISTRICT

The American College of Surgeons wishes to recognize and thank the following companies for their commercial promotion towards this educational activity:

BRONZE

Ethicon

Exhibitors

Baxter

CSL Behring

EndoGastric Solutions

Ethicon

Gore & Associates

Kerecis

5th Medical Recruiting Station New Orleans

Olympus

Organogenesis

Pacira Biosciences

Takeda Pharmaceuticals

Teleflex



**Thank You to the following programs for
supporting the Women in Surgery Reception**

Ochsner Health

LSU Health New Orleans

LSU Health Shreveport

Tulane School of Medicine