

LA-ACS/ SAL

2016

Annual Meeting **January 15-17**

Final Program

**New Orleans Downtown Marriott
at the Convention Center**

2016 PROGRAM COMMITTEE

Hosein Shokouh-Amiri, MD, FACS – LA-ACS President

Quyen Chu, MD, FACS – SAL President

W. Charles Conway, MD, FACS – Co-Chair

Eliana Soto, MD, FACS – Co-Chair

Lance Stuke, MD, FACS – Co-Chair & Mock Oral Chair

Kamel Brakta, MD, FACS – Co-Chair

Table of Contents

2	2015 LA-ACS and SAL Officers
3	LA-ACS Past Presidents
3	Accreditation Statement
3	CME Credit
4	Disclosure Information
7	Meeting Schedule
7	7th Annual Surgical Jeopardy
12	Posters
13	Faculty
14	Sponsorship & Exhibitors

2015 LA-ACS Council

PRESIDENT

Hosein Shokouh-Amiri, MD, FACS
Willis Knighton Health System
Shreveport, LA

PRESIDENT ELECT

Philip Cole, MD, FACS
Colon & Rectal Associates
Shreveport, LA

VICE-PRESIDENT

John Hunt, MD, FACS
LSU Health – New Orleans
New Orleans, LA

SECRETARY

Juan Duchesne, MD, FACS
North Oaks Shock Trauma Center
Hammond, LA

TREASURER

Rachel Moore, MD, FACS
LSU Health – New Orleans
New Orleans, LA

PAST PRESIDENT

Barry Landry, MD, FACS
Thibodeaux Surgical Specialist
Thibodeaux, LA

COUNCILORS

Jason Breaux, MD, FACS
Surgical Specialist of Lafayette
Lafayette, LA

Andrew Werner, MD, FACS
Colon & Rectal Associates
Shreveport, LA

Kerry Byrnes, MD, FACS
Green Clinic
Ruston, LA

Eliana Soto, MD, FACS
LSU Health – New Orleans
New Orleans, LA

William Charles Conway, MD, FACS
Ochsner Medical Center
New Orleans, LA

COMMITTEE CHAIRS

Cancer Committee Chairman
Quyen Chu, MD, FACS
LSU Health – Shreveport
Shreveport, LA

TRAUMA COMMITTEE CHAIR

Juan Duchesne, MD, FACS
North Oaks Shock Trauma Center
Hammond, LA

PROGRAM CO-CHAIRS

Eliana Soto, MD, FACS
William Charles Conway, MD, FACS
Lance Stuke, MD, FACS
Kamel Brakta, MD, FACS

ACS REPRESENTATIVES

Governors at Large
William Richardson, MD, FACS
Ochsner Medical Center
New Orleans, LA

Gazi Zibari, MD, FACS
Willis-Knighton Health System
Shreveport, LA

ACS Representative

F. Dean Griffen, MD, FACS
LSU Health – Shreveport
Shreveport, LA

YOUNG FELLOWS ASSOCIATION

Lance Stuke, MD, FACS
LSU Health – New Orleans
New Orleans, LA

LA-ACS/SAL EXECUTIVE DIRECTOR

Janna Pecquet
janna@laacs.org

SAL Board

PRESIDENT

Quyen Chu, MD, FACS
LSU Health – Shreveport
Shreveport, LA

SECRETARY

Lance Stuke, MD, FACS
LSU Health – New Orleans
New Orleans, LA

TREASURER

Clifton McGinness, MD, FACS
Tulane School of Medicine
New Orleans, LA

PAST PRESIDENT

Kevin Sittig, MD, FACS
LSU Health – Shreveport
Shreveport, LA

COUNCILORS

James Korndorffer, MD, FACS
Tulane School of Medicine
New Orleans, LA

Roger Kim, MD, FACS
LSU Health – Shreveport
Shreveport, LA

Tze-Woei Tan, MD, FACS
LSU Health – Shreveport
Shreveport, LA

Kishore Reddy, MD

Past Presidents

Howard Mahorner, MD, FACS	1952
Paul Abramson, MD, FACS	1953
Ambrose Storck, MD, FACS	1954
Humphrey Hardy, MD, FACS	1955
IW Kaplan, MD, FACS	1956
R. Gordon Holcombe, MD, FACS	1957
Fred Boyce, MD, FACS	1958-1962
Woodard Beacham, MD, FACS	1963
Leonard H Stander, MD, FACS	1964
Claude Craighead, MD, FACS	1965-1966
Paul M Davis, MD, FACS	1967
Edgar P Breaux, MD, FACS	1968
Elmo J Cerise, MD, FACS	1969
Philip Krupp, MD, FACS	1970
Charles Knight, Sr., MD, FACS	1971
Robert Schramel, MD, FACS	1972
Merrill O. Hines, MD, FACS	1973
Milton Hoffman, MD, FACS	1974
Charles A Beskin, MD, FACS	1975
John L. Ochsner, MD, FACS	1976
Arthur Vidrine, Jr., MD, FACS	1977
George D. Lyons, MD, FACS	1978
D.J. Palmintier, MD, FACS	1979
Cedric Lowrey, MD, FACS	1980
George W. Hoffman, MD, FACS	1981
Paul B. Lansing, MD, FACS	1982
Joe Morleand, MD, FACS	1983
Margaret Longo, MD, FACS	1984
John C. Bowen, III, MD, FACS	1985
Robert Batson, MD, FACS	1986
John D. Jackson, MD, FACS	1987
Donald G Edgerton, MD, FACS	1988
Michael S. Rohr, MD, FACS	1989
John Tolson, MD, FACS	1990
Larry H. Hollier, MD, FACS	1991
F. Dean Griffen, MD, FACS	1992
W. Chapman Lee, MD, FACS	1993
Weston P. Miller, MD, FACS	1994
Lynn H. Harrison, MD, FACS	1995
J Benton Dupont, MD, FACS	1996
Victor Tedesco, MD, FACS	1997
John Bolton, MD, FACS	1998
Charles Knight, Jr., MD, FACS	1999
J Patrick O'Leary, MD, FACS	2000
William Weldon, MD, FACS	2001
James Nelson, MD, FACS	2002
C. Edward Foti, MD, FACS	2003
Edgar Feinberg, MD, FACS	2004
Lester Johnson, MD, FACS	2005
Kevin Sittig, MD, FACS	2006
Gus Colon, MD, FACS	2007
Robert Marshall, MD, FACS	2008
Daniel Frey, MD, FACS	2009
Benjamin Li, MD, FACS	2010
Joseph Uddo, MD, FACS	2011
Gazi Zibari, MD, FACS	2012
William S Richardson, MD, FACS	2013
Barry G. Landry, MD, FACS	2014

OBJECTIVES

This program is designed for the practicing surgeon. It is meant to provide an update in the various disciplines of surgery with application to daily practice, and to enhance the knowledge of the participant in these areas. The program is intended to meet the needs of surgeons in clinical practice for up to date information on the latest techniques in general and specialty surgical areas and to provide a means for surgical students and researchers to report the results of their research.

DISCLOSURE INFORMATION

In compliance with ACCME Accreditation Criteria, the American College of Surgeons, as the accredited provider of this activity, must ensure that anyone in a position to control the content of the educational activity has disclosed all relevant financial relationships with any commercial interest. All reported conflicts are managed by a designated official to ensure a bias-free presentation. Please see 5-6 of this program for the complete disclosure list.

CONTINUING MEDICAL EDUCATION CREDIT INFORMATION

Accreditation

The American College of Surgeons is accredited by the Accreditation Council for Continuing Medical Education (ACCME) to provide continuing medical education for physicians.

AMA PRA Category 1 Credits™

The American College of Surgeons designates this live activity for a maximum of 12.5 AMA PRA Category 1 Credits™. Physicians should claim only the credit commensurate with the extent of their participation in the activity.

Of the AMA PRA Category 1 Credits™ listed above, a maximum of 6.75 credits meet the requirements for Self-Assessment.



AMERICAN COLLEGE OF SURGEONS
Inspiring Quality:
Highest Standards, Better Outcomes



AMERICAN COLLEGE OF SURGEONS
DIVISION OF EDUCATION
Accredited with Commendation by the
Accreditation Council for Continuing Medical Education

Saturday, January 16

CME=7.5

SA=4.75

Sunday, January 17

CME=5.0

SA=2

CME CERTIFICATES

Attendance certificates for the Annual Meeting will be handed out at the meeting. You must complete the CME Attendance Evaluation and return it to the Registration Desk. The meeting staff will fill out your certificate and hand it to you before you leave the meeting.

You must complete the evaluation to receive your credits.

Do you need your ACS Member Number? Stop by the registration desk and we will look it up for you.

My **CME** Your CME @
Your Convenience

- Online CME tracking system
- Available 24/7
- Print duplicate CME certificates
- Transfer CME credits directly to ABS
- Exclusive to ACS Members
- My CME page can be accessed at www.efacs.org

Disclosure Information

LA-ACS Annual Meeting

January 15-17, 2016

In accordance with the ACCME Accreditation Criteria, the American College of Surgeons must ensure that anyone in a position to control the content of the educational activity has disclosed all relevant financial relationships with any commercial interest. Therefore, it is mandatory that both the program planning committee and speakers complete disclosure forms. Members of the program committee were required to disclose **all** financial relationships and speakers were required to disclose any financial relationship **as it pertains to the content of the presentations**. The ACCME defines a 'commercial interest' as "any entity producing, marketing, re-selling, or distributing health care goods or services consumed by, or used on, patients". It does not consider providers of clinical service directly to patients to be commercial interests. The ACCME considers "relevant" financial relationships as financial transactions (in any amount) that may create a conflict of interest and occur within the 12 months preceding the time that the individual is being asked to assume a role controlling content of the educational activity.

The ACCME also requires that ACS manage any reported conflict and eliminate the potential for bias during the session. The planning committee members and speakers were contacted and the conflicts listed below have been managed to our satisfaction. However, if you perceive a bias during a session, please advise us of the circumstances on the session evaluation form.

Please note we have advised the speakers that it is their responsibility to disclose at the start of their presentation if they will be describing the use of a device, product, or drug that is not FDA approved or the off-label use of an approved device, product, or drug or unapproved usage.

The requirement for disclosure is not intended to imply any impropriety of such relationships, but simply to identify such relationships through full disclosure, and to allow the audience to form its own judgments regarding the presentation.

SPEAKERS / MODERATORS/ CHAIRS / DISCUSSANTS	NOTHING TO DISCLOSE	DISCLOSURE (As it pertains to the content of the presentation)
Quyen Chu, MD, FACS	x	
David Pointer, MD	x	
Meijiao Zhou, MS, MPH	x	
Kaelen Medeiros, BA	x	
Muhammad Anwar, MBBS	x	
Koji Tsumagari, MD, PhD	x	
Peter Lundberg, MD	x	
Doug Slakey, MD, FACS	x	
Jacob Hebert, MD	x	
Gazi Zibari, MD, FACS	x	
Ronald Maier, MD, FACS	x	
Jack Hua, BS	x	
Genevieve Hayek, MD	x	
Lauren Pointer, MD	x	
Ben Pearce, MD	x	
Lisa Newman, MD, MPH, FACS	x	
Sara Morse	x	
Juan Duchesne, MD, FACS	x	
Jiselle Heaney, MD	x	
Benjamin Martinez, MD	x	
Megan Lipcsey, BA	x	

DISCLOSURE INFORMATION continued...

SPEAKERS / MODERATORS/ CHAIRS / DISCUSSANTS	NOTHING TO DISCLOSE	DISCLOSURE (As it pertains to the content of the presentation)
Patrick Greiffenstein, MD	x	
William Richardson, MD, FACS	x	
Eliana Soto, MD, FACS	x	
Rachel Moore, MD, FACS		Receives a salary from Olympus and Apollo Endosurgery for professional education
Lance Stuke, MD, FACS	x	
Claudie Sheehan, MD, FACS	x	
Ralph Corsetti, MD, FACS	x	
Jeffrey Barton, MD	x	
William Conway, MD, FACS	x	
Zakaria Abd Elmageed, PhD	x	
Shoie Tanaka, MD	x	
Jessica Zagory, MD	x	
David Swift, BS	x	
Daniah Bu Ali, MD	x	
Alireza Hamidian Jahromi, MD	x	
Narendra Battula, MD	x	
William Smith, DO	x	
Samuel Bledsoe, MD	x	
John Owings, MD, FACS	x	
Martin Carney, MS	x	
John Hunt, MD, FACS	x	
Hosein Shokouh-Amiri, MD,FACS	x	
Obinwanne Emejulu, MD	x	
Linley Diao, BA	x	
Morgan Martin, MD	x	
William Richardson, MD, FACS	x	
Lance Stuke, MD, FACS	x	
Eliana Soto, MD, FACS	x	
Donnie Aultman, MD, FACS	x	
PLANNING COMMITTEE	NOTHING TO DISCLOSE	DISCLOSURE (All commercial relationships)
Hosein Shokouh-Amiri, MD, FACS	X	
Quyen Chu, MD, FACS	X	
Lance Stuke, MD, FACS	X	
Eliana Soto, MD, FACS	X	
Charles Conway, MD, FACS	X	

7th Annual Surgical Jeopardy Bowl

Contestants

Tulane School of Medicine

David Pointer, MD - PGY-3

Kira Long, MD - PGY-5

Ochsner Clinic Foundation

Hannah Kooperkamp, MD - PGY-2

Jacob Hebert, MD - PGY-4

LSU Health -Shreveport

Lloyd Jones, Jr., MD - PGY-3

F. Bennett Pearce, MD - PGY-4

LSU Health-New Orleans

Jesse Sulzer - PGY-3

Cianna Pender - PGY-5

Saturday, January 16, 2016

Round One

4:15pm

Game One

Tulane University School of Medicine

Ochsner Medical Center

Game Two

LSU Health – Shreveport

LSU Health – New Orleans

Moderators

Donnie Aultman, MD, FACS

William Richardson, MD, FACS

Judges

Kerry Byrnes, MD, FACS

Jason Breaux, MD, FACS

Sunday, January 17, 2016

Championship Round

11:45am

FRIDAY, JANUARY 15, 2016

11:30am **Mock Oral Registration Opens**

12:00pm **Mock Oral Lunch**

1:00pm-5:00pm **Mock Orals**

5:00pm-7:00pm **Mock Orals Happy Hour**

SATURDAY, JANUARY 16, 2016

6:45am-5:00pm

Registration Open

6:45am-5:00pm

Exhibits Open

6:45am-8:00am

Continental Breakfast

7:00am-8:00am

ACS Committee Meetings

- Cancer Committee
- Trauma Committee

Scientific Session I: Surgical Oncology

8:05am-8:55am

Moderator: Quyen Chu, MD, FACS

LSU Health Shreveport, Shreveport, LA

2016 Cancer Paper Winners

8:05am-8:15am 3rd Place Winner

SURGEON EXPERIENCE AND THE DECISION OF PANCREATIC RESECTION IN PANCREATIC CANCER PATIENTS: A NATIONAL PERSPECTIVE

Presenter: David Pointer, MD

Tulane School of Medicine, New Orleans, LA

8:15am-8:25am 2nd Place Winner

INADEQUATE LYMPH NODES RETRIEVED, LACK OF RECEIPT OF ADJUVANT CHEMOTHERAPY, AND SOCIOECONOMIC FACTORS CONTRIBUTE TO THE POOR SURVIVAL IN STAGE IIB/C (T4N0) COMPARED TO STAGE IIIA (T1-2N1, T1N2A) COLON CANCER

Presenter: Meijiao Zhou, MS, MPH

LSU Health New Orleans, New Orleans, LA & LSU Health Shreveport, Shreveport, LA

8:25am-8:35am 1st Place Winner

CAN RADIATION THERAPY ADEQUATELY ADDRESS POSITIVE SURGICAL MARGINS IN ELDERLY

Presenter: Kaelen Medeiros, BA

LSU Health New Orleans, New Orleans, LA & LSU Health Shreveport, Shreveport, LA

8:35am-8:45am

DO THE RECENT AMERICAN THYROID ASSOCIATION GUIDELINES ACCURATELY GUIDE THE BIOPSY ACCORDING TO THE NODULE SIZE? A RETROSPECTIVE REVIEW

Presenter: Daniah Bu Ali, MD

Tulane School of Medicine, New Orleans, LA

8:45am-8:55am

DUAL TARGETING OF NF-KB AND MAPK PATHWAYS IN MELANOMA INDUCES SYNERGISTIC INHIBITION OF CELL GROWTH AND INDUCTION OF APOPTOSIS.

Presenter: Koji Tsumagari, MD, PhD

Tulane School of Medicine, New Orleans, LA

Scientific Session II: General Surgery

8:55am-9:35am

Moderator: Lance Stuke, MD, FACS

LSU Health New Orleans, New Orleans, LA

8:55am-9:05am

SEPTIC BUT NOT EQUAL: COMPARING TRANSFERRED AND DIRECTLY ADMITTED PATIENTS AT AMERICAN AND FRENCH TERTIARY CARE HOSPITALS

Presenter: Peter Lundberg, MD

Tulane School of Medicine, New Orleans, LA

9:05am-9:15am

LOUISIANA SURGICAL WORKFORCE: CURRENT STATUS AND PROJECTED NEEDS

Presenter: Doug Slakey, MD, FACS

Tulane School of Medicine, New Orleans, LA

9:15am-9:25am

DOES BPH SYMPTOM SCORING CORRELATE WITH DIFFICULTY URINATING AFTER HERNIA SURGERY?

Presenter: Jacob Hebert, MD

Ochsner Clinic Foundation, New Orleans, LA

9:25am-9:35am

MINIMALLY INVASIVE VERSUS OPEN SURGERY IN TREATMENT OF LIVER LESIONS

Presenter: Gazi Zibari, MD, FACS

John C McDonald Transplant Center, Shreveport, LA

9:35am-10:05am

American College of Surgeons Update

Invited Speaker: Ronald Maier, MD, FACS

University of Washington Medicine, Seattle, WA

10:05am-10:30am

Break with Exhibitors

10:30am-10:35am

Why Your Support Matters ACS Foundation Update

Presenter: Quyen Chu, MD, FACS

LSU Health Shreveport, Shreveport, LA

Scientific Session III: Mini-Talk

10:35am-11:00am

Moderator: Hosein Shokouh-Amiri, MD, FACS

John C. McDonald Transplant Center, Shreveport, LA

10:35am-10:40am

THE INCIDENCE OF ACUTE ARTERIAL EVENTS IN THE RENAL CELL CARCINOMA PATIENT POPULATION

Presenter: Jack Hua, BS

Tulane School of Medicine, New Orleans, LA

10:40am-10:45am

PREDICTING THE USE OF POSTMASTECTOMY RADIATION THERAPY IN BREAST CANCER PATIENTS TREATED WITH MASTECTOMY, IMMEDIATE RECONSTRUCTION, AND CHEMOTHERAPY

Presenter: Genevieve Hayek, MD

Ochsner Clinic Foundation, New Orleans, LA

10:45am-10:50am

HOSPITAL-BASED DISPARITIES IN CARE AND OUTCOMES FOR UPPER GASTROINTESTINAL BLEEDING

Presenter: Lauren Pointer, MD

Tulane School of Medicine, New Orleans, LA

10:50am-10:55am

AORTIC ENDARTERECTOMY FOLLOWED WITH IMMEDIATE INFRARENAL AORTIC CLAMPING CIRCUMFERENTIAL AORTIC ENDARTERECTOMY FOLLOWED WITH IMMEDIATE INFRARENAL CLAMPING MAY AVOID SUPRARENAL CLAMPING FOR JUXTARENAL AORTOILILAC OCCLUSION: SUPRARENAL CLAMPING IS NOT NECESSARY

Presenter: Ben Pearce, MD

LSU Health Shreveport, Shreveport, LA

10:55am-11:00am

EFFECT OF FACILITY TYPE ON OUTCOME FOLLOWING PANCREATECTOMY FOR PANCREATIC ADENOCARCINOMA: ANALYSIS OF THE NATIONAL CANCER DATA BASE

Presenter: Kaelen Medeiros, BA

LSU Health New Orleans, New Orleans, LA & LSU Health Shreveport, Shreveport, LA

11:00am-11:30am

Management of the Axilla in Breast Cancer

Invited Speaker: Lisa Newman, MD, MPH, FACS

Henry Ford Health System, Detroit, MI

11:30am-12:00pm

Medicare Reform

Invited Speaker: Sara Morse

American College of Surgeons, Washington, DC

12:00pm-1:00pm

Lunch

12:00pm-1:00pm

Women in Surgery Luncheon

Career Development for Women in Surgery

Guest Speaker: Lisa Newman, MD, MPH, FACS

1:00pm-1:15pm

LA-ACS & SAL Business Meetings

Scientific Session IV:

Trauma and Critical Care

1:15pm-2:30pm

Moderator: Juan Duchesne, MD, FACS

North Oaks Medical Center, Hammond, LA

1:15pm-1:25pm Committee on Trauma Paper Winner

IMPLICATIONS OF THE INCLUSION OF NON-SURVIVABLE INJURIES FOR PERFORMANCE BENCHMARKING IN THE TRAUMA QUALITY IMPROVEMENT PROJECT

Presenter: Jiselle Heaney, MD

Tulane School of Medicine, New Orleans, LA

1:25pm-1:35pm

ROUTING CRITICALLY ILL PATIENTS TO THE APPROPRIATE HOSPITAL ACCORDING TO THE LERN PROTOCOL DECREASED THE RATE OF SUBSEQUENT TRANSFERS

Presenter: Benjamin Martinez, MD

LSU Health New Orleans, New Orleans, LA

1:35pm-1:45pm

THE CENTER FOR DISEASE CONTROL DEFINITION FOR VENTILATOR-ASSOCIATED PNEUMONIA SURVEILLANCE LACKS CLINICAL SIGNIFICANCE IN TRAUMA ICU PATIENTS

Presenter: Megan Lipcsey, BA

Tulane School of Medicine, New Orleans, LA

1:45pm-1:55pm

ULTRASOUND GUIDED RIB FRACTURE HEMATOMA BLOCK USING LIPOSOMAL BUPIVACAINE: CASE SERIES USING A NEW TECHNIQUE

Presenter: Patrick Greiffenstein, MD

LSU Health New Orleans, New Orleans, LA

1:55pm-2:30pm

Update on Resuscitation of the Severely Injured Patient

Invited Speaker: Ronald Maier, MD, FACS

University of Washington Medicine, Seattle, WA

2:30pm-2:45pm

Break with Exhibitors

Special Session:

Updates in General Surgery

2:45pm-4:15pm

Moderators

William Richardson, MD, FACS

Ochsner Clinic Foundation, New Orleans, LA

Eliana Soto, MD, FACS

LSU Health New Orleans, New Orleans, LA

SPEAKERS

Sarcoma/Melanoma

Ralph Corsetti, MD, FACS

Ochsner Clinic Foundation, New Orleans, LA

Bariatrics Surgery

Rachel Moore, MD, FACS

Surgical Specialist of Louisiana, New Orleans, LA

Trauma

Lance Stuke, MD, FACS

LSU Health New Orleans, New Orleans, LA

Vascular Surgery

Claudie Sheehan, MD, FACS

LSU Health New Orleans, New Orleans, LA

Hepatocellular Carcinoma

Quyen Chu, MD, FACS

LSU Health Shreveport, Shreveport, LA

Colorectal

Jeffrey Barton, MD

LSU Health New Orleans, New Orleans, LA

GIST

William Conway, MD, FACS

Ochsner Clinic Foundation, New Orleans, LA

4:15pm-5:00pm

Resident Surgical Jeopardy

SUNDAY, JANUARY 17, 2016

6:45am-12:00pm
Registration Open

7:00am-12:00pm
Exhibits Open

7:00am-8:00am
Continental Breakfast

7:00am-8:00am
Poster Competition

Scientific Session V: Mini-Talks

8:05am-8:30am
Moderator: Donnie Aultman, MD, FACS
Willis Knighton Health Systems, Shreveport, LA

8:05am-8:10am
IMMUNOHISTOCHEMISTRY AS ACCURATE TOOL FOR EVALUATING BRAF-V600E IN 130 SAMPLES OF PAPILLARY THYROID CANCER PATIENTS
Presenter: Zakaria Abd Elmageed, PhD
Tulane School of Medicine, New Orleans, LA

8:10am-8:15am
THE IMPACT OF CHEMOTHERAPY ON THE COMPLICATIONS ASSOCIATED WITH MASTECTOMY AND IMMEDIATE AUTOLOGOUS TISSUE RECONSTRUCTION
Presenter: Shoie Tanaka, MD
Ochsner Clinic Foundation, New Orleans, LA

8:15am-8:20am
CONVERSION OF A DIVERSE PEDIATRIC SURGERY GROUP TO LAPAROSCOPIC INGUINAL HERNIA REPAIR: TRAVERSING THE LEARNING CURVE
Presenter: Jessica Zagory, MD
LSU Health New Orleans, New Orleans, LA

8:20am-8:25am
CAN IT GET EASIER THAN ABC?: A SEE "SI" FILE
Presenter: David Swift, BS
Tulane School of Medicine, New Orleans, LA

8:25am-8:30am
ROBOTIC THYROID SURGERY: ANALYSIS OF DIFFERENT APPROACHES
Presenter: Daniah Bu Ali, MD
Tulane School of Medicine, New Orleans, LA

Scientific Session VI: Surgical Potpourri

8:30am-9:40am
Moderator: William Chuck Conway, MD, FACS
Ochsner Health Systems, New Orleans, LA

8:30am-8:40am
A NOVEL MODEL OF MURINE CHRONIC LIMB ISCHEMIA USING PARTIAL FEMORAL ARTERY LIGATION
Presenter: Alireza Hamidian Jahromi, MD
LSU Health Shreveport, Shreveport, LA

8:40am-8:50am
UTILIZING IMPORTED LIVER GRAFTS FOR HEPATOCELLULAR CANCER RECIPIENTS
Presenter: Narendra Battula, MD
Ochsner Clinic Foundation, New Orleans, LA

8:50am-9:00am
LUNG TRANSPLANT AND THE USE OF CARDIOPULMONARY BYPASS
Presenter: William Smith, DO
Keesler Air Force Base, Diberville, LA

9:00am-9:10am
PREDICTORS OF SUCCESS AFTER BARIATRIC SURGERY BASED ON PREOPERATIVE PSYCHOLOGICAL ASSESSMENTS
Presenter: Samuel Bledsoe, MD
Mid Louisiana Surgical, Alexandria, LA

9:10am-9:40am
High-Risk/TNBC and African Ancestry
Invited Speaker: Lisa Newman, MD, MPH, FACS
Henry Ford Health System, Detroit, MI

9:40am-10:10am
Explosions and Pressure Related Injuries
Invited Speaker: John Owings, MD, FACS
LSU Health Shreveport, Shreveport, LA

10:10am-10:30am
Break with Exhibitors

Scientific Session VII: Video Session

10:30am-10:50am
Moderator: Quyen Chu, MD, FACS
LSU Health Shreveport, Shreveport, LA

10:30am-10:40am
ROBOTIC WHIPPLE PROCEDURE
Presenter: Gazi Zibari, MD, FACS
John C McDonald Transplant Center, Shreveport, LA

10:40am-10:50am
LAPAROSCOPIC-ASSISTED TRANSGASTRIC ERCP WITH SPINCTEROTOMY
Presenter: Martin Carney, MS
Tulane School of Medicine, New Orleans, LA

10:50am-11:15am
Trauma Systems
Invited Speaker: John Hunt, MD, FACS
LSU Health New Orleans, New Orleans, LA

Scientific Session VIII: Mini-Talks

11:15am-11:45am

Moderator: T-Woei Tan, MD, FACS, RPVI
LSU Health Shreveport, Shreveport, LA

11:15am-11:20am

MINIMALLY INVASIVE VERSUS OPEN SURGERY IN TREATMENT OF PANCREATIC LESIONS

Presenter: Hosein Shokouh-Amiri, MD, FACS
John C. McDonald Transplant Center, Shreveport, LA

11:20am-11:25am

THE NONRECURRENT LARYNGEAL NERVE: AN ANATOMIC VARIATION WORTH KNOWING ABOUT IN THYROID AND PARATHYROID SURGERY

Presenter: Obinwanne Emejulu, MD
Tulane School of Medicine, New Orleans, LA

11:25am-11:30am

IS ORANGE THE NEW KOOL-AID FLAVOR? TIME FOR AN EVIDENCE BASED APPROACH OF THE RESOURCES FOR OPTIMAL CARE OF THE INJURED PATIENT 2014

Presenter: Juan Duchesne, MD, FACS
North Oaks Hospital, Hammond, LA

11:30am-11:35am

MINIMAL IMPACT OF COOPERATIVE TRIAL AND SOCIODEMOGRAPHIC VARIATION OF RADIATION THERAPY USAGE IN ELDERLY PATIENTS WITH STAGE I, ER+/ PR+ BREAST CANCER: ANALYSIS OF THE NATIONAL CANCER DATA BASE

Presenter: Quyen Chu, MD, FACS
LSU Health Shreveport, Shreveport, LA

11:35am-11:40am

TIME IS ON OUR SIDE: PRE-HOSPITAL RESUSCITATION INTERVENTIONS AND OUTCOMES IN SEVERELY INJURED PATIENTS

Presenter: Linley Diao, BA
Tulane School of Medicine, New Orleans, LA

11:40am-11:45am

TREATMENT OF REFRACTORY LUNG MUCORMYCOSIS IN RENAL TRANSPLANT RECIPIENT

Presenter: Morgan Martin, MD
Tulane School of Medicine, New Orleans, LA

11:45am-12:15pm

Final Resident Surgical Jeopardy

Poster #1

OUTCOMES OF HEMODIALYSIS RELIABLE OUTFLOW (HERO) GRAFT: A SYSTEMIC REVIEW AND METAANALYSIS

Francesca Armstrong MD
LSU Health Shreveport, Shreveport, LA

Poster #2

RELATIVE RECURRENCE OF DIFFERENTIATED THYROID CANCER FOLLOWING RADIOACTIVE IODINE ABLATION AFTER LOBECTOMY VERSUS TOTAL THYROIDECTOMY: A SYSTEMATIC ANALYSIS

Erin Dawson BA
Tulane University School of Medicine, New Orleans, LA

Poster #3

"THE GOLDEN HOUR": ITS IMPACT IS STILL FLYING HIGH

Marquinn Duke MD
North Oaks Medical Center, Hammond, LA

Poster #4

A PROSPECTIVE STUDY COMPARING THE EFFICACY AND SURGICAL OUTCOMES OF THYROID AND PARATHYROID SURGERY BETWEEN HARMONIC FOCUS SCALPELS VERSUS LIGASURE™ SMALL JAW.

Taha Hassoon MD
Tulane University School of Medicine, New Orleans, LA

Poster #5

THE IMPACT OF LUMPECTOMY AND MASTECTOMY WITH OR WITHOUT RECONSTRUCTION ON THE TIME FROM BREAST CANCER DIAGNOSIS TO SURGERY AND CHEMOTHERAPY

Genevieve Hayek MD
Ochsner Medical Center, New Orleans, LA

Poster #6

DO SUSPICIOUS ULTRASONOGRAPHIC FEATURES AND BRAF-V600E MUTATION CORRELATE IN PAPILLARY THYROID CANCER PATIENTS?

Abida Kadi MD
Tulane University School of Medicine, New Orleans, LA

Poster #7

BLEEDING RISK AFTER FINE NEEDLE ASPIRATION OF THYROID NODULES IN PATIENTS ON ANTITHROMBOTIC THERAPY

Roostam Kholmatov MD, PhD
Tulane University School of Medicine, New Orleans, LA

Poster #8

PULMONARY ENDARTERECTOMY FOR CHRONIC THROMBOEMBOLIC PULMONARY HYPERTENSION

Hannah Kooperkamp MD
Ochsner Medical Center, New Orleans

Poster #9

CORRELATION OF CLINICAL AND ULTRASONOGRAPHIC FEATURES TO MALIGNANT DISEASE IN PATIENTS WITH INDETERMINATE THYROID NODULES

Fadi Murad MD, BS
Tulane University School of Medicine, New Orleans, LA

Poster #10

INTRAOPERATIVE PTH LEVELS ARE PREDICTIVE OF POST-OPERATIVE HYPOCALCEMIA

Corbin Pomeranz B.A.
Tulane University School of Medicine, New Orleans, LA

Poster #11

DO RESIDENTS AND FELLOWS AT LSUHSC FEEL CONFIDENT MANAGING DIALYSIS ACCESS?

Justin Rudd MD
LSU Health Shreveport, Shreveport, LA

Poster #12

DOES OPERATIVE CASE VOLUME AFFECT SURGERY IN-TRAINING EXAM SCORES?

Clint Schoolfield MD
LSU Health Shreveport, Shreveport, LA

Poster #13

ROBOTIC SINGLE-SITE CHOLECYSTECTOMY IN CHILDREN

Adele Williams MD
LSU Health New Orleans, New Orleans, LA

Poster #14

A MYTH BUSTERS CASE: ARE SHORTER OR TIMES OF THE ESSENCE IN DAMAGE CONTROL LAPAROTOMY?

Jordan Włodarczyk BS
Tulane University School of Medicine, New Orleans, LA

Poster #15

GASTRIC PERFORATION SECONDARY TO METASTATIC MERKEL CELL CARCINOMA - A RARE PRESENTATION OF A RARE DISEASE

Kala Zorn MD
Tulane University School of Medicine, New Orleans, LA

Faculty

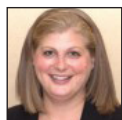


Ronald Maier, MD, FACS, FRCS Ed (Hon)
Jane and Donald D. Trunkey
Endowed Chair in Trauma Surgery
Professor and Vice-chairman of surgery
University of Washington (UW) Medicine
Seattle, WA

First Vice-President
American College of Surgeons
Chicago, IL



Lisa Newman, MD, MPH, FACS
Director of the Breast Oncology Program
Henry Ford Health Systems
Detroit, MI



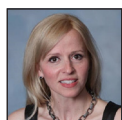
Sara Morse
Legislative and Political Affairs
American College of Surgeons
Division of Advocacy and Health Policy
Washington, DC



Rachel Moore, MD, FACS
General Surgeon
Surgical Specialist of Louisiana
New Orleans, LA



Lance Stuke, MD, FACS
Associate Professor of Clinical Surgery
Section of Trauma and Critical Care Surgery
Associate Program Director
LSU Health New Orleans
New Orleans, LA



Claudie Sheehan, MD, FACS
Associate Professor of Clinical Surgery
Division of Vascular Surgery
LSU Health New Orleans
New Orleans, LA



Ralph Corsetti, MD, FACS
Assistant Professor of Surgery
Ochsner Health Systems
New Orleans, LA



Quyen Chu, MD, FACS
Chief of Surgical Oncology
Charles Knight, Sr. Endowed Professor of Surgery
LSU Health Shreveport
Shreveport, LA



Jeffrey Barton, MD
Assistant Professor of Clinical Surgery
LSU Health New Orleans
New Orleans, LA



William Conway, MD, FACS
Surgical Oncology/HPB Surgery
Ochsner Health Systems
New Orleans, LA



John Owings, MD, FACS
Professor of Surgery
Medical Director & Division Chief
Division of Trauma & Acute Care Surgery
LSU Health Shreveport
Shreveport, LA



John Hunt, MD, MPH, FACS
Pfizer /Hank McCrorie Endowed Professor
of Trauma Surgery and Anesthesia
Departments of Surgery and Anesthesiology
Chief, Division of Trauma & Critical Care Surgery
Program Director
General Surgery Residency Program &
Critical Care Fellowship
LSU Health New Orleans
New Orleans, LA

Exhibitors

We'd like to thank the following exhibitors for their support.

Silver

Ethicon

Bronze

Applied Medical

Baxter

Thank you for supporting the LA-ACS Mock Orals

Baxter

Kindred Hospitals

AbbVie

Applied Medical

Bard Davol

Baxter

Ethicon

Genetech

Independent Disability Specialists

Medtronic-Covidien

Olympus America, Inc.

US Army Healthcare Recruiting

Z-Medica

Stay Connected

Be sure to like us on Facebook and Twitter. Stay up-to-date on the meeting.
Post and Tweet about the meeting #LAACSannualmeeting16.



LouisianaACS



@LA_ACS

#LAACSannualmeeting16